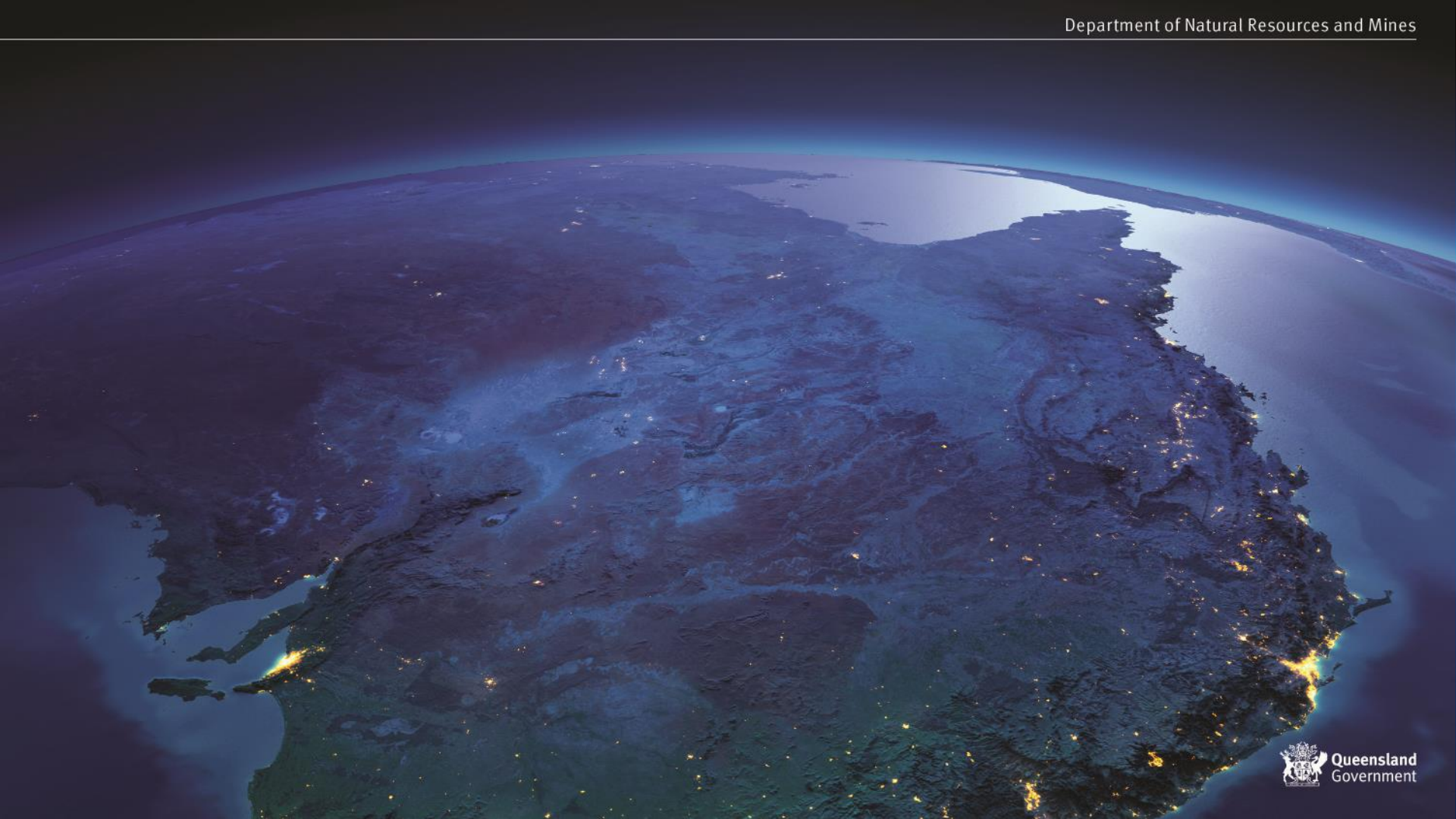


- Managing spatial data
- Positioning technology
- Latest spatial imagery
- New access tools



Spatial data

- related to the surface of the Earth (incl. above & below)

- Latitude / longitude
- Coordinates (X,Y & Z)
- Big & Small, Natural & Built objects
 - *Country*
 - *State & Region*
 - *Local Government Area, Electorate, Postcode...*
 - *Place, Locality, Suburb*
 - *Street Address, Road*
 - *Building, apartment, shop, room...*
 - *Point*
- Typically grouped into Themes or Layers

Spatial Data Themes

Imagery is a snapshot of Queensland's natural and physical assets and environment captured by a camera or sensor from terrestrial, Remotely Piloted Aircraft System (drone), manned aircraft, or satellite platforms.

Location Address describes where the physical location of a property is.

Place Names are the recorded names of cultural, physical and geographical features (whether natural or artificial).

Transport is the representation of land, water and air networks (roads, rail, ports and transport infrastructure).

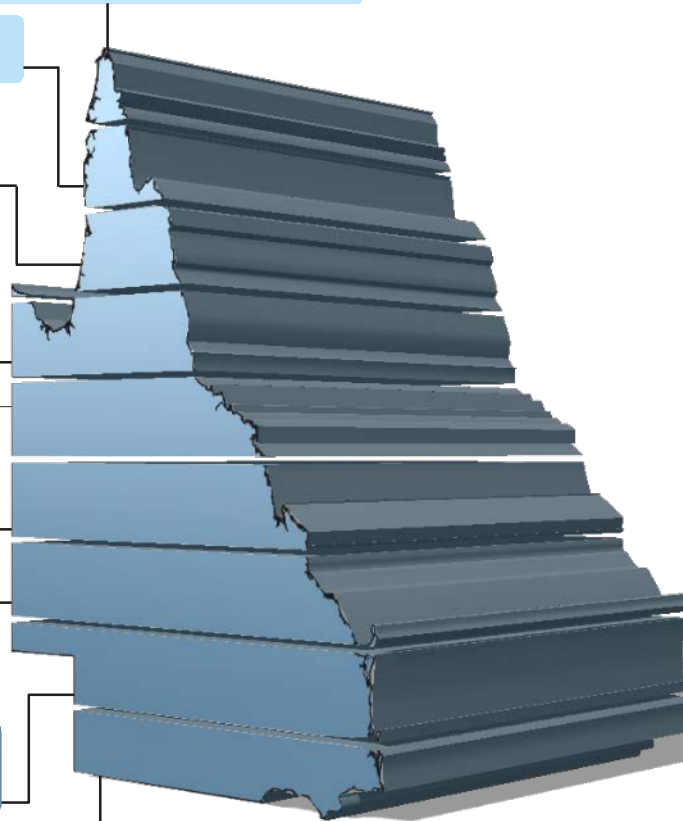
Administrative Boundaries is a collection of legislative, regulatory, statistical, political, maritime and other general administrative boundaries.

Land Parcel and Property (cadastre) contains descriptive data including boundaries, tenure, ownership type, size and a record of interests in land for the purpose of land administration.

Elevation and Depth is the measurement of the Earth's surface above or below a vertical datum.

Water encompasses the movement, distribution, and quality of surface water or groundwater.

Positioning provides the precise location of points above, on or within the earth (includes names, unique code, latitude, longitude, datum and height).



Queensland Foundation Spatial Data Themes (10)



Imagery

Imagery provides a photographic record of Queensland's natural and physical assets and environment recorded from an aircraft or satellite.



Location addressing

Location addressing is used to describe the physical location of a property, i.e. any separately owned or occupied area of land, or each separately owned or occupied building or part of a building.



Place Names

Place Names are the recorded names of cultural and physical features with associated location and extent - the most commonly used spatial identifier and can include alternate and historical place names.



Transport

Transport describes the land, water and air networks used to move people and goods, and deliver services - providing information on roads, rail, ports, and transportation infrastructure.



Land Parcel and Property

Land Parcel and Property provides the basic fabric of land ownership. The cadastre is established for land administration including land parcel and property information.

Queensland Foundation Spatial Data Themes (10)



Administrative Boundaries

Administrative Boundaries are a collection of legislative, regulatory, political, maritime and general administrative boundaries sourced from local and state boundary datasets.



Land Cover

Land Cover is the observed biophysical cover on the earth's surface including trees, shrubs, grasses, soils, exposed rocks and water bodies, and other elements such as plantations, crops and built environments.



Water

Water encompasses the hydrology of movement, distribution, and quality of water - includes surface hydrology, hydrogeology and drainage basin management.



Elevation and Depth

Elevation and Depth is the measurement of the Earth's surface above or below a vertical datum to obtain the land height or bathymetric depth.



Positioning

Positioning provides a common reference system for establishing a coordinate system for all spatial data. It ties all spatial data to a common and recognised horizontal (GDA94) and vertical (AHD) coordinate system.

Coordinate Consistency



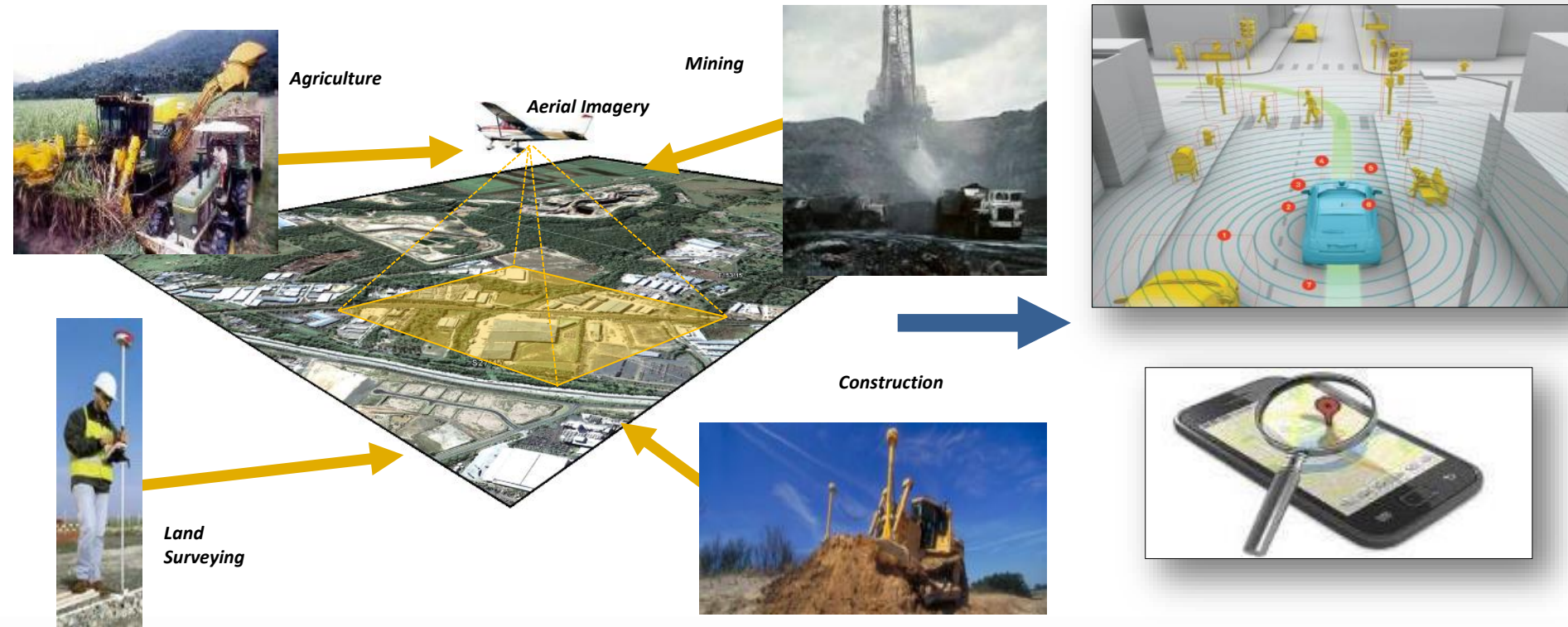
All Spatial Data on the same Geodetic Datum

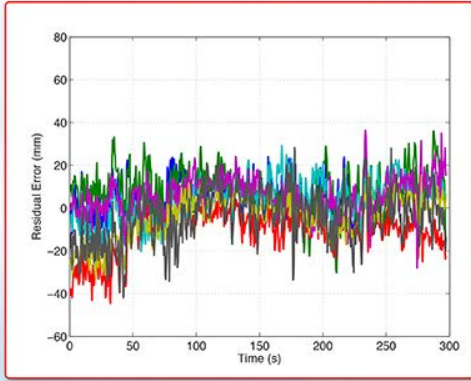
Geodetic
Datum
Imagery +
DCDB +
Addresses +
Boundaries
+...



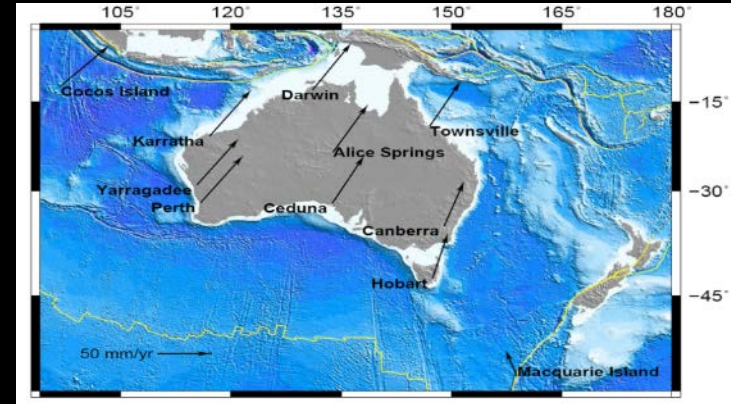


Precise Positioning Applications





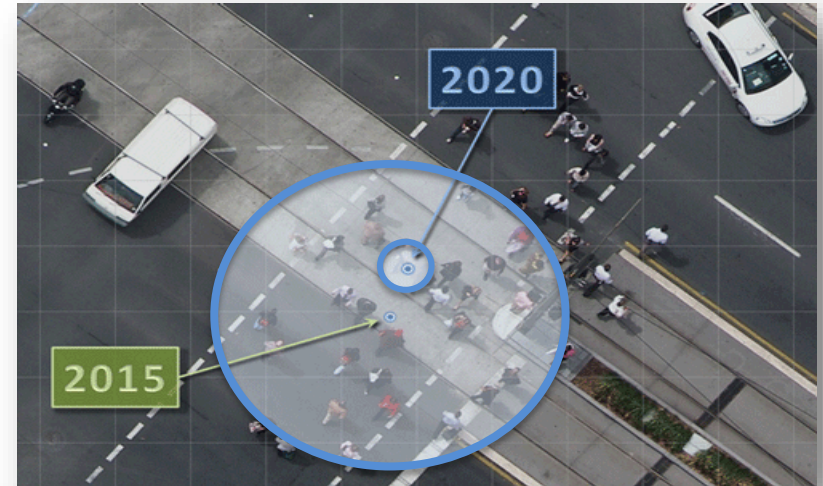
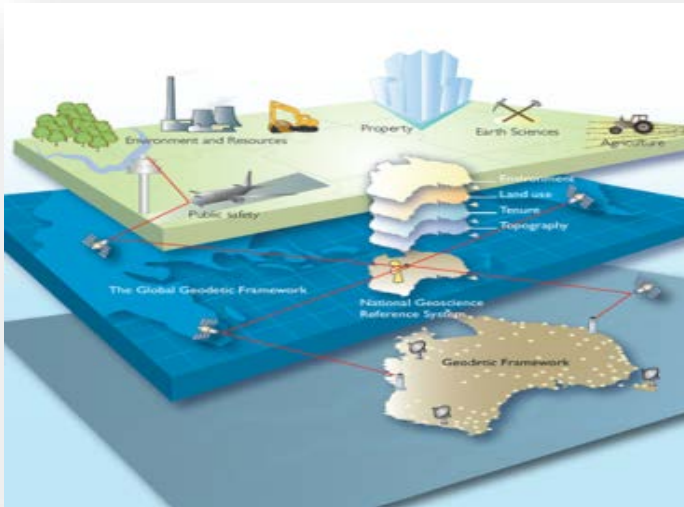
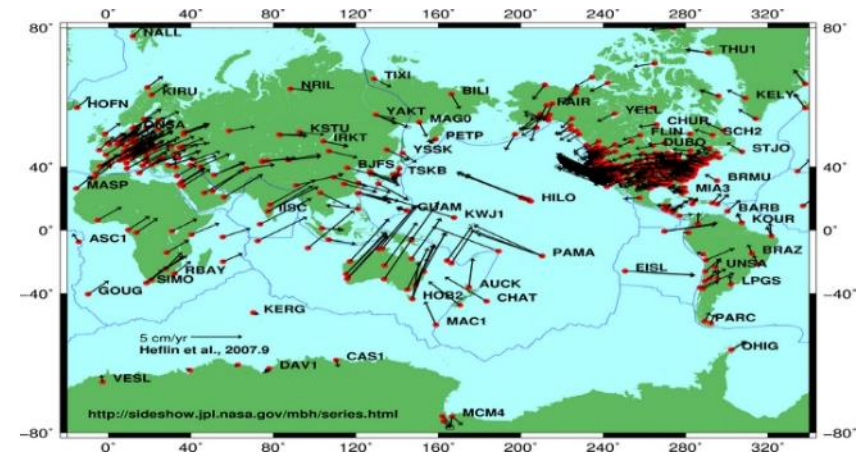
It is possible to get
 $\pm 3\text{cm}$ from GNSS
Smart phones now



But the country is
moving 7.5cm p.a. !

Our datum needs to move with the times...

- Currently on GDA94
- Moving to GDA2020
- Plan to introduce a dynamic datum





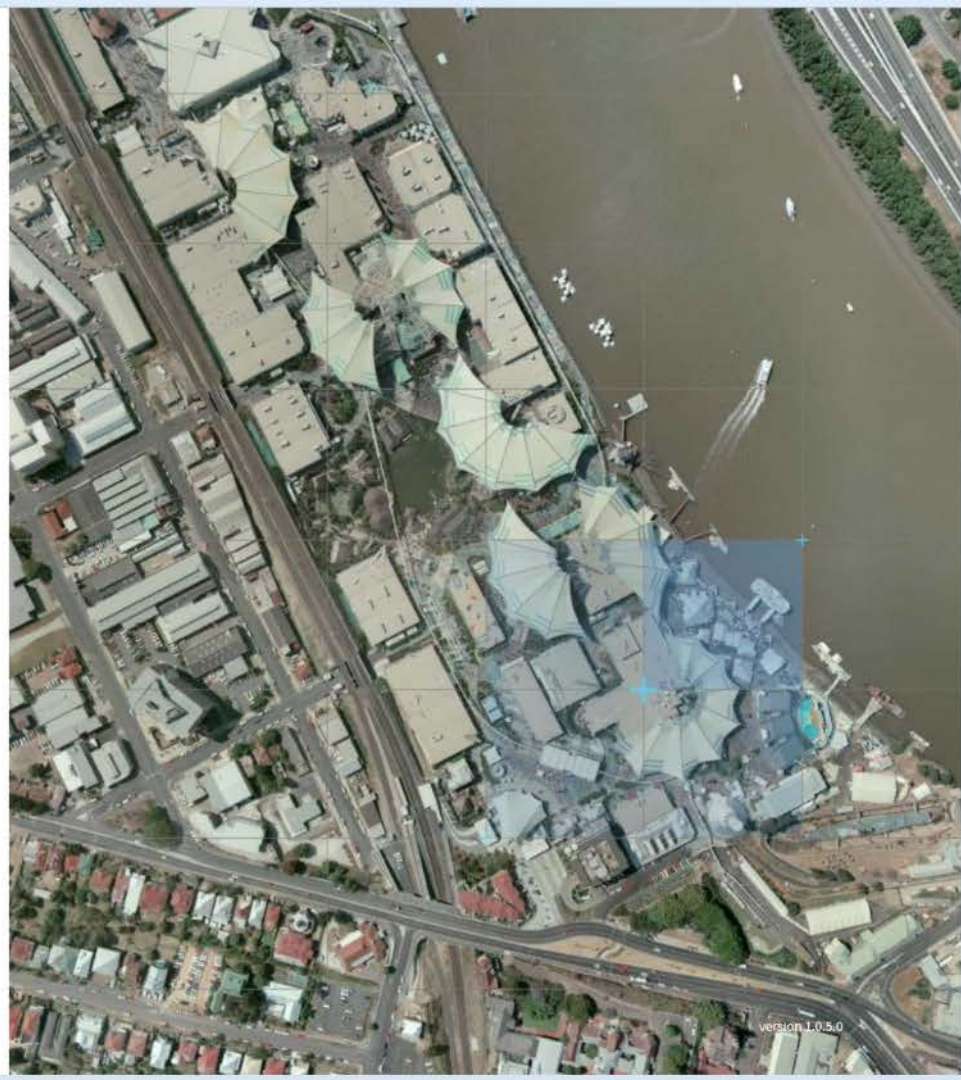
Welcome to QImagery

Queensland Government's online collection of photographs from the 1930's to 2009.

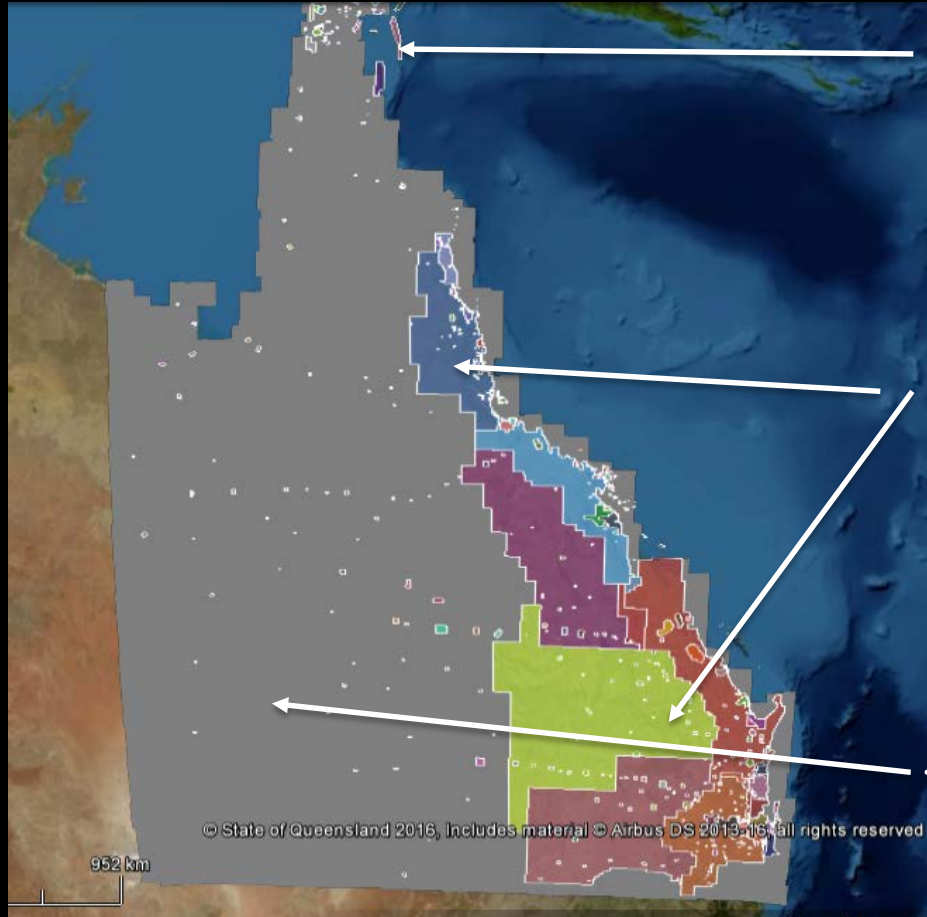
Search and download images as you investigate Queensland's history and see how the landscape has changed over time. The photographs are available free to everyone for use as they require within licence conditions.

☐ I acknowledge I have read and agree to the [Terms & Conditions](#).

Get started



Queensland's current imagery program



Drones
(2cm resolution)
very small area projects



Aerial photography (aircraft: 10cm – 50cm)
large area projects



Satellite imagery
(space: 1.5m
resolution)
state-wide every 3
years





DNRM Market Assessment (RFI / RFQ)

Acquisition of State-wide Satellite Imagery




intelligent data from space



Will deliver:

- High resolution imagery at 80cm - *(was 1.5m)*
- Annual state-wide acquisition – *(was every 3 years)*
- Available in the Queensland Globe

This is a high-resolution aerial satellite image from the SPOT 1.5m sensor, showing a river system in Strathmore. The image displays a dense network of dark, vegetated areas interspersed with lighter, brownish-tan regions representing bare soil, sand, or floodplains. A prominent, light-colored, winding channel runs diagonally from the upper right towards the lower right. Another similar channel is visible on the left side, branching off towards the bottom left. The overall pattern suggests a complex hydrological system with multiple channels and extensive floodplain areas.

OLD - Strathmore SPOT 1.5m – 3 February 2015

An aerial photograph showing a complex river network. The main river channel is prominent, winding through the landscape. It has several meanders and is flanked by dark, forested areas. There are numerous smaller tributaries and oxbow-like features. The terrain appears to be a mix of agricultural fields and natural vegetation. The colors are somewhat muted, with a lot of browns, greys, and dark greens. A yellow text overlay is at the bottom right.

NEW - Strathmore Earth-i 80cm – 20 June 2016



OLD - Strathmore SPOT 1.5m – 3 February 2015



NEW - Strathmore Earth-i 80cm – 20 June 2016



OLD - Betoota SPOT 1.5m – 12 July 2013



NEW - Betoota Earth-i 80cm – 28 August 2016



OLD - Mt Isa SPOT 1.5m – 8 December 2013



NEW - Mt Isa Earth-i 80cm – 28 August 2016



OLD - Kogan Cattle Yards SPOT 1.5m – 19 August 2013



NEW - Kogan Cattle Yards Earth-i 80cm – 24 May 2016

A Superior Solution...

- *Tender process identified a new and unique opportunity*



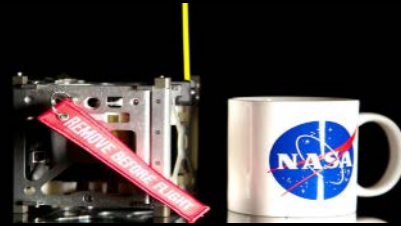
A Superior Solution...

- *Tender process also identified a new and unique opportunity*
- *Cube Sats – Geoplex / Planet Labs*

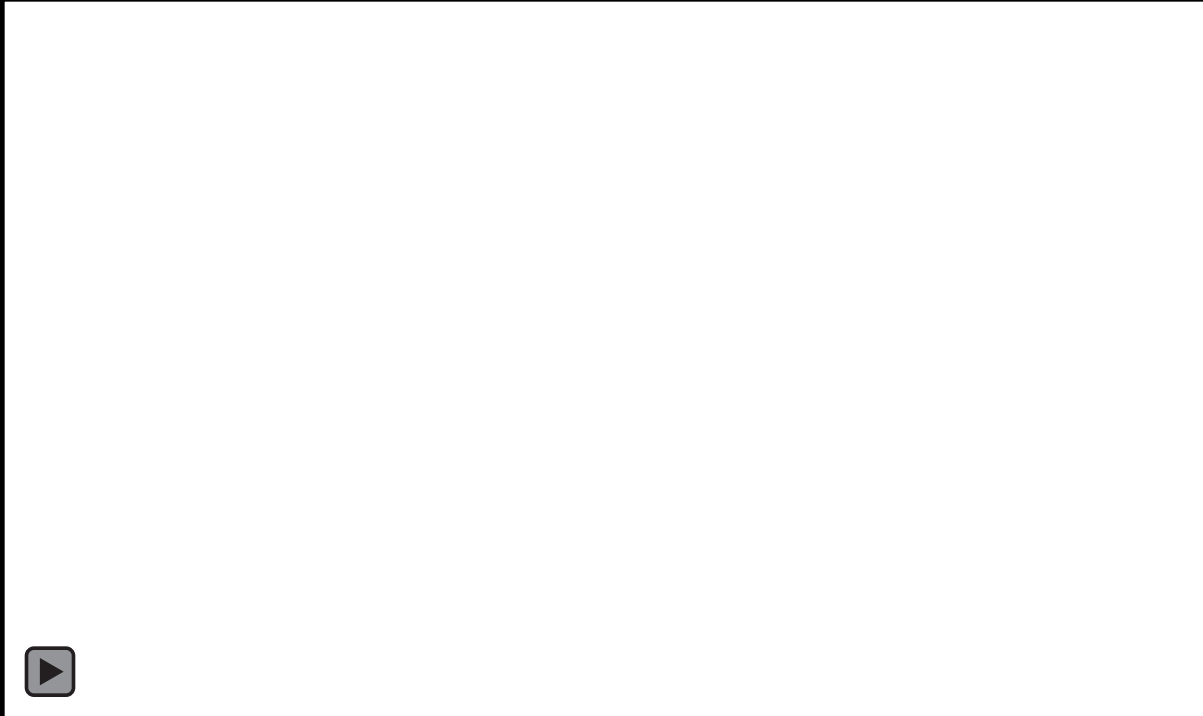


CubeSats:

- *Small (10cm x 10cm x 30cm)*
- *Low cost (\$10K - \$100K)*
- *Many (hundreds of them)*
- *Medium resolution (+/- 3m)*
- *Daily imagery*



ABC Catalyst program – Tuesday 18th October 2016



Vegetation Management

An aerial photograph showing a landscape with a cleared area. The cleared area is a large, irregularly shaped patch of light brown and tan soil, located in the center-right of the image. It is surrounded by dense green forest and vegetation. The cleared area appears to be a result of vegetation management or clearing. The surrounding landscape is hilly and covered in dense green vegetation, with some smaller cleared patches visible. The overall scene is a mix of natural forest and human-managed land.

Vegetation clearing near Hazeldean – 6 June 2016

Vegetation Management

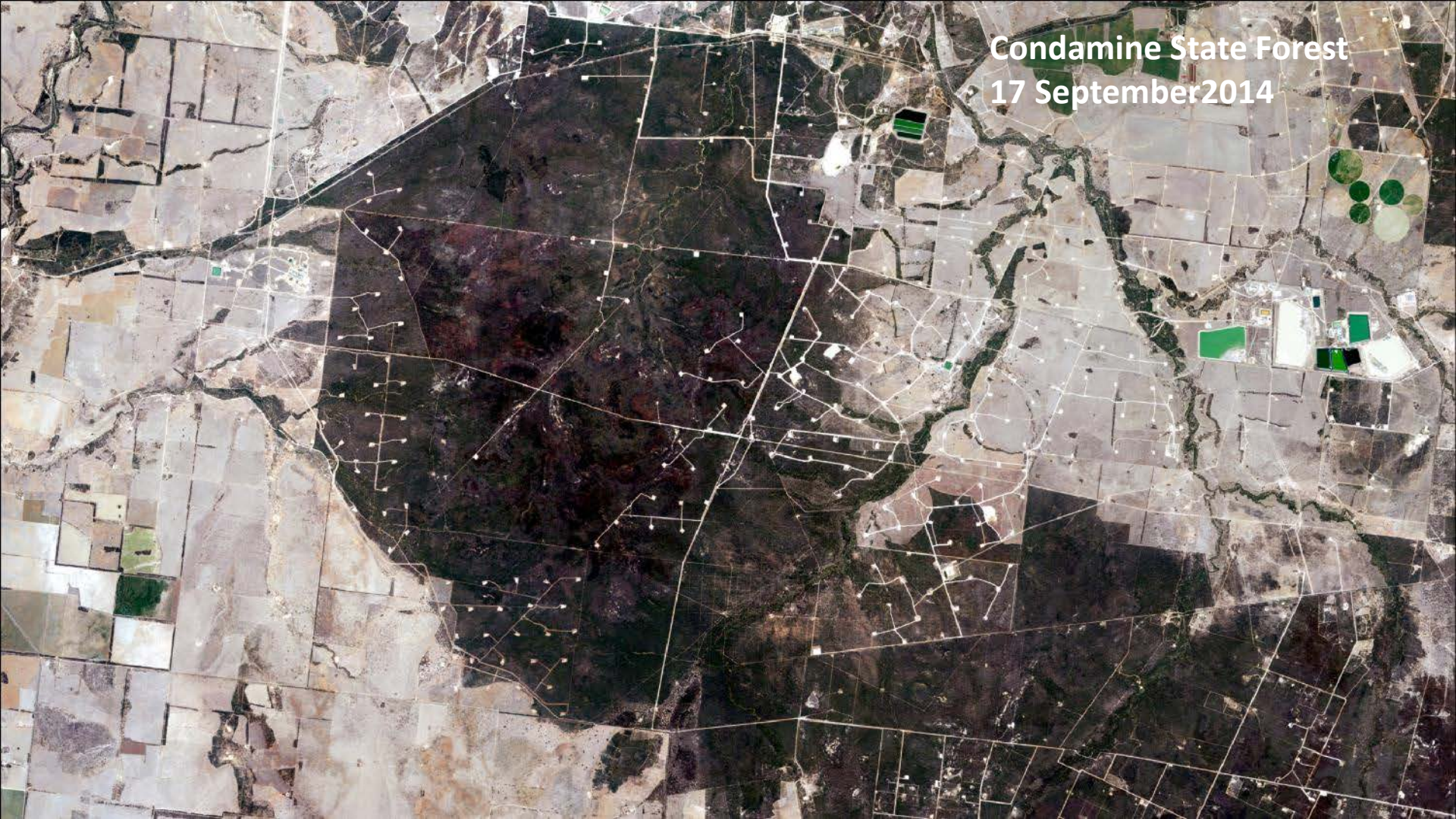


Vegetation clearing near Hazeldean – 27 July 2016

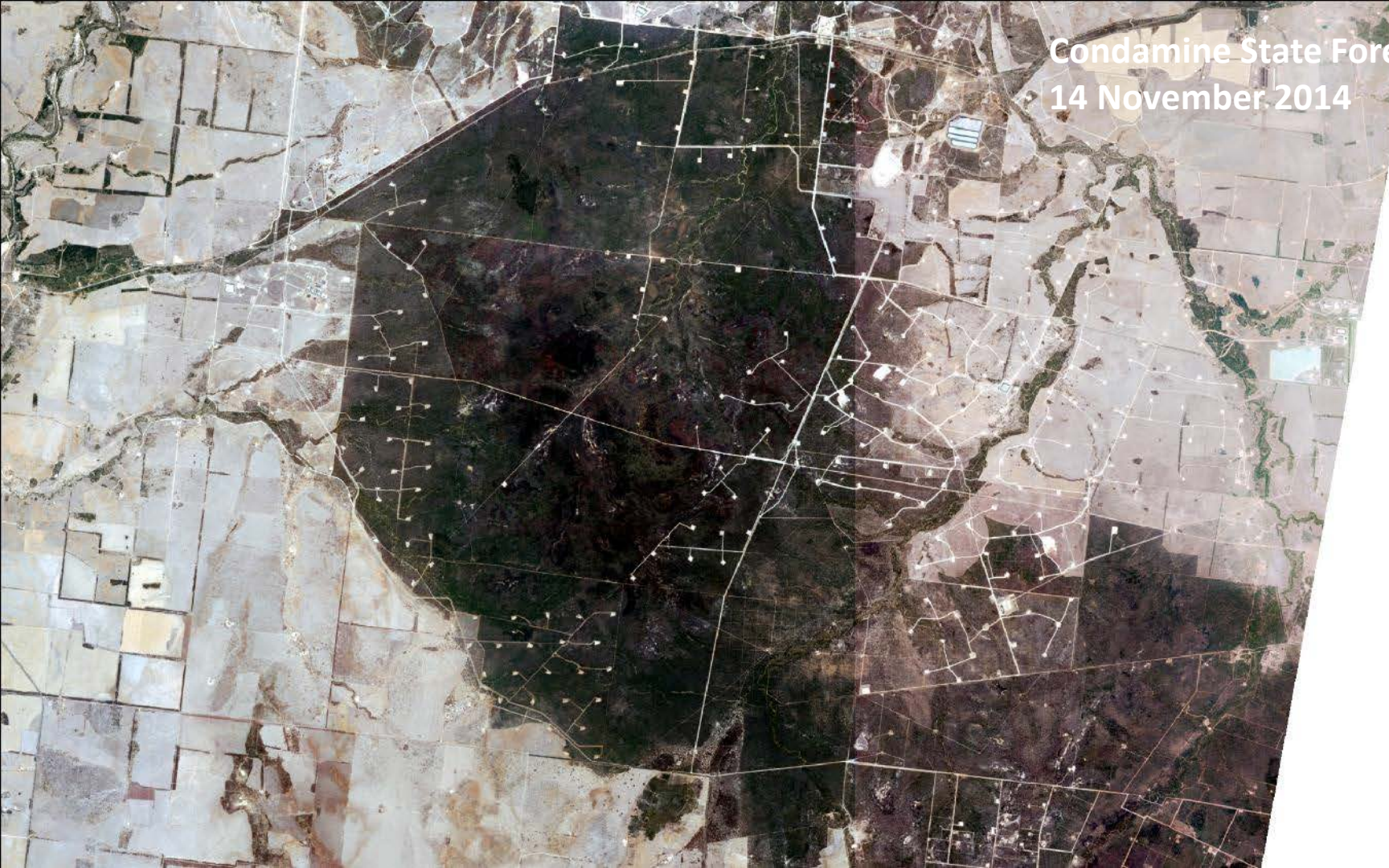
Condamine State Forest
31 July 2014



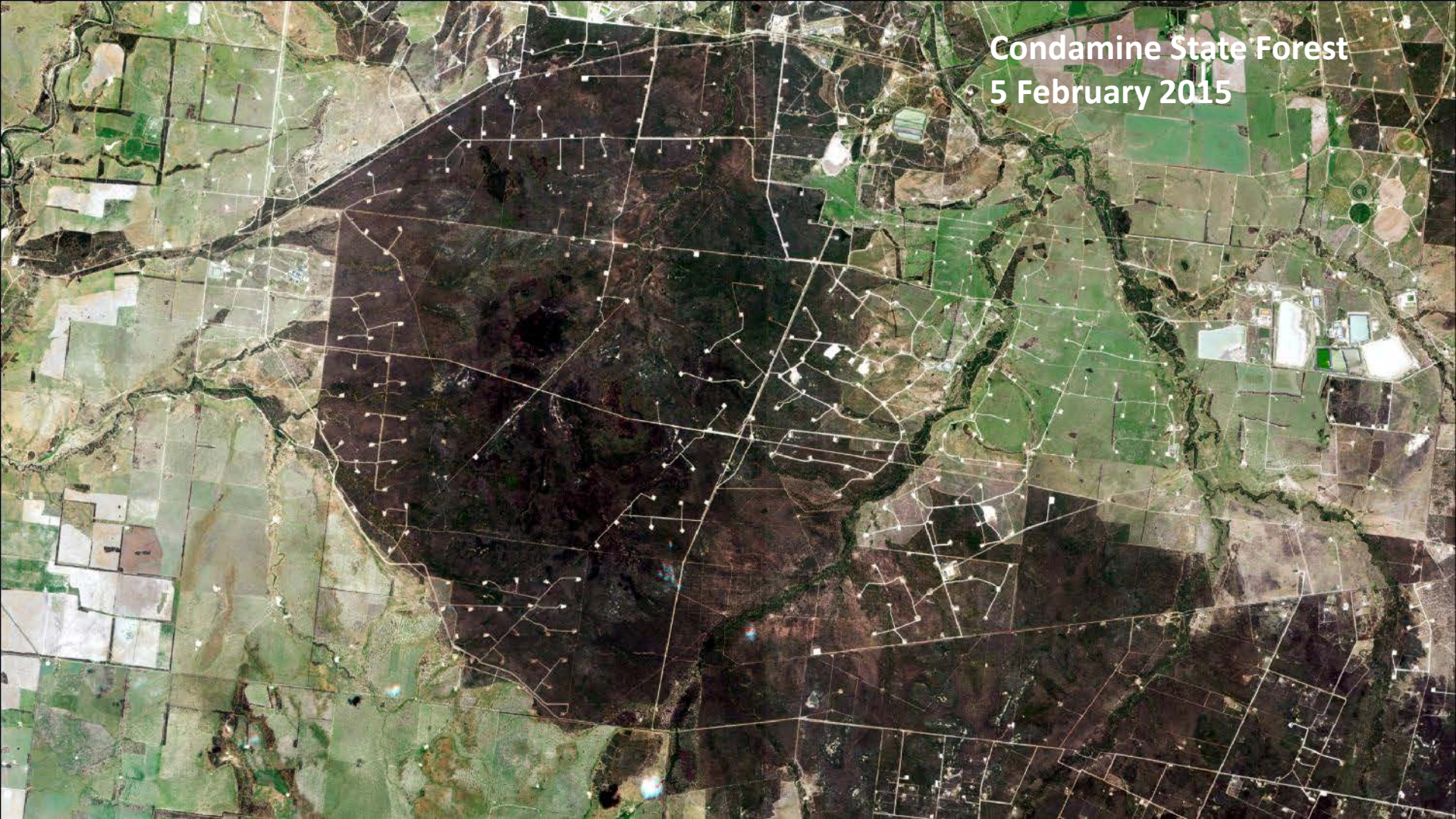
Condamine State Forest
17 September 2014



Condamine State Forest
14 November 2014

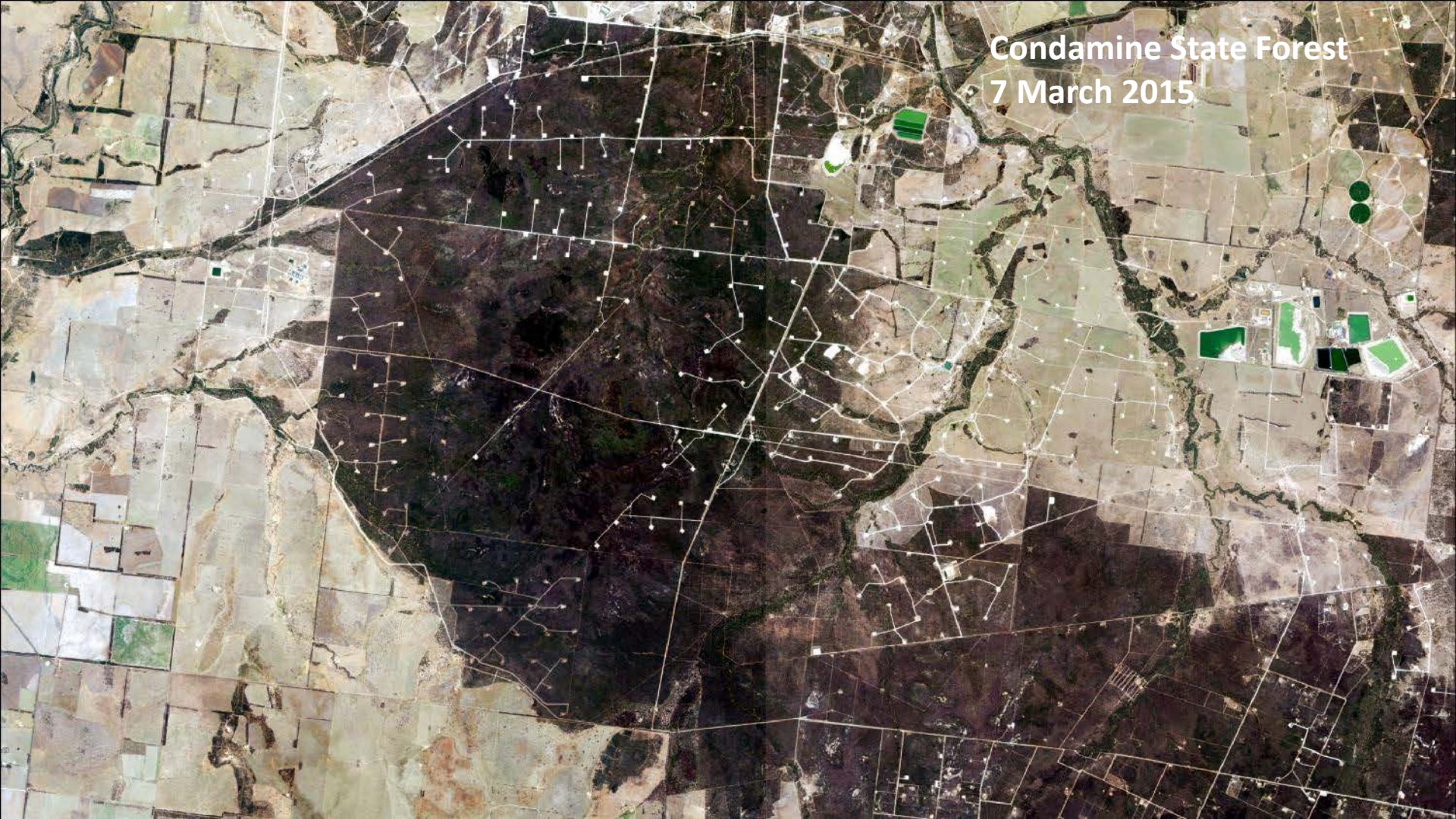


Condamine State Forest
5 February 2015



Condamine State Forest

7 March 2015



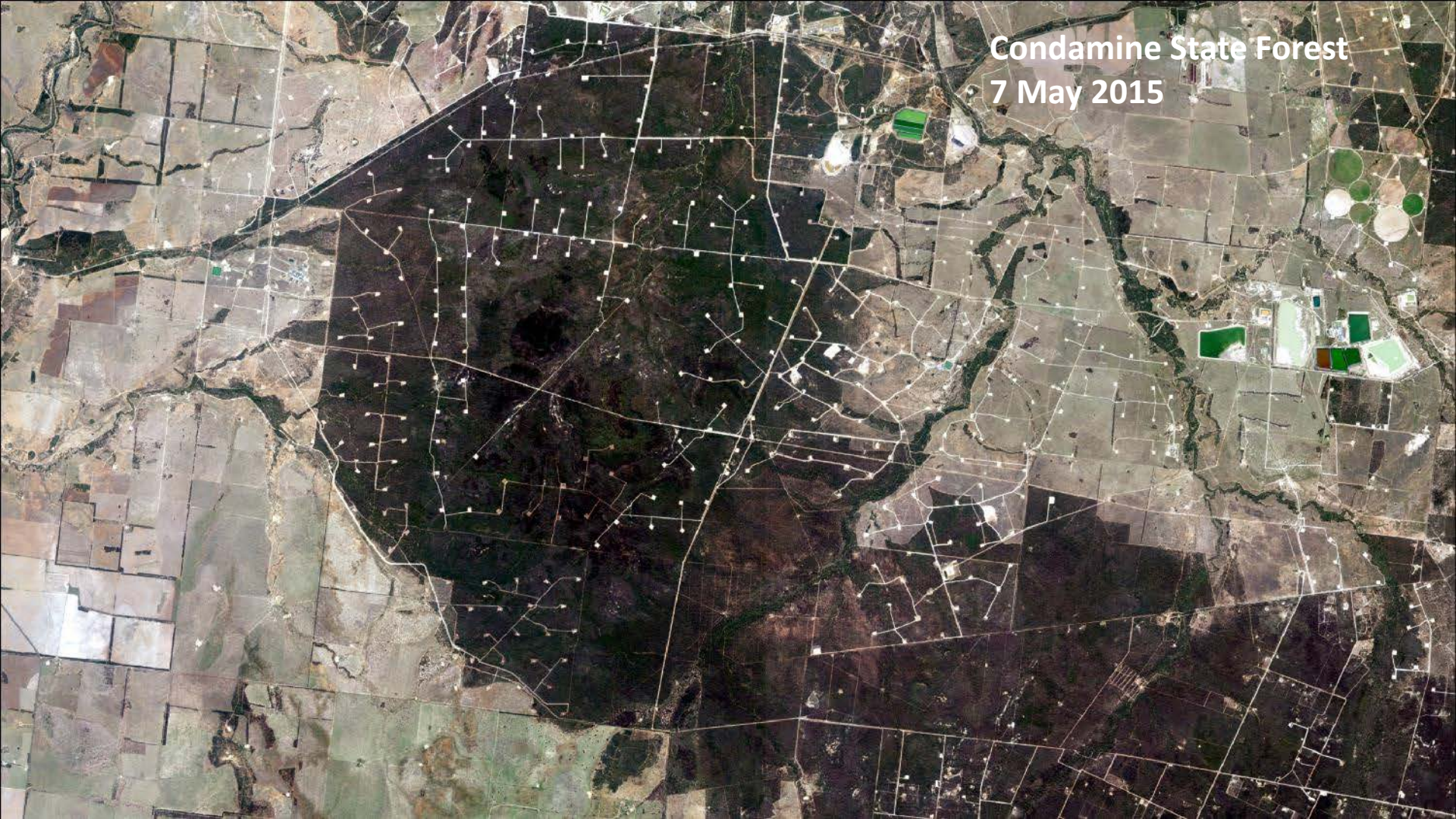
Condamine State Forest

21 March 2015



Condamine State Forest

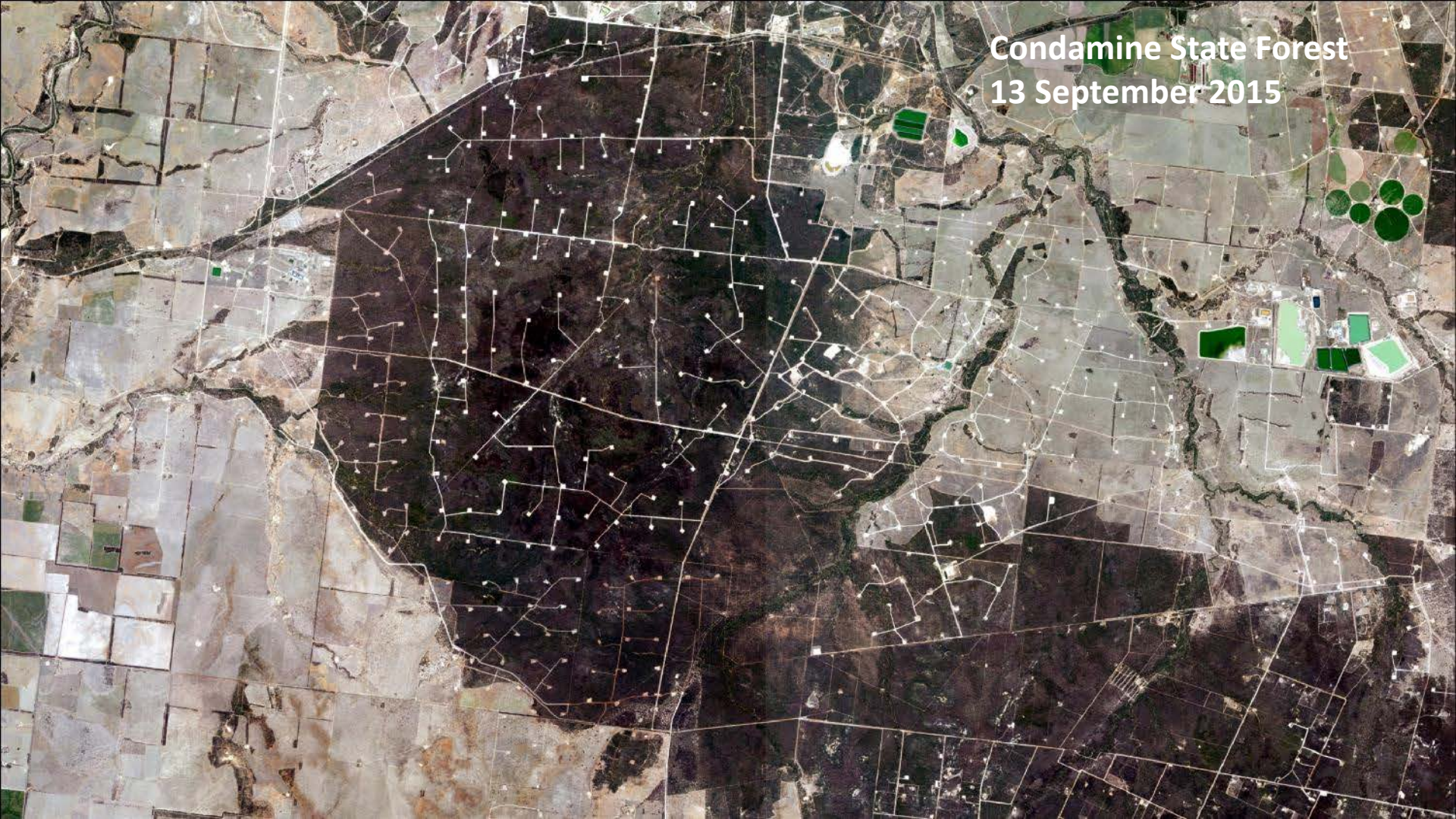
7 May 2015



Condamine State Forest
9 August 2015

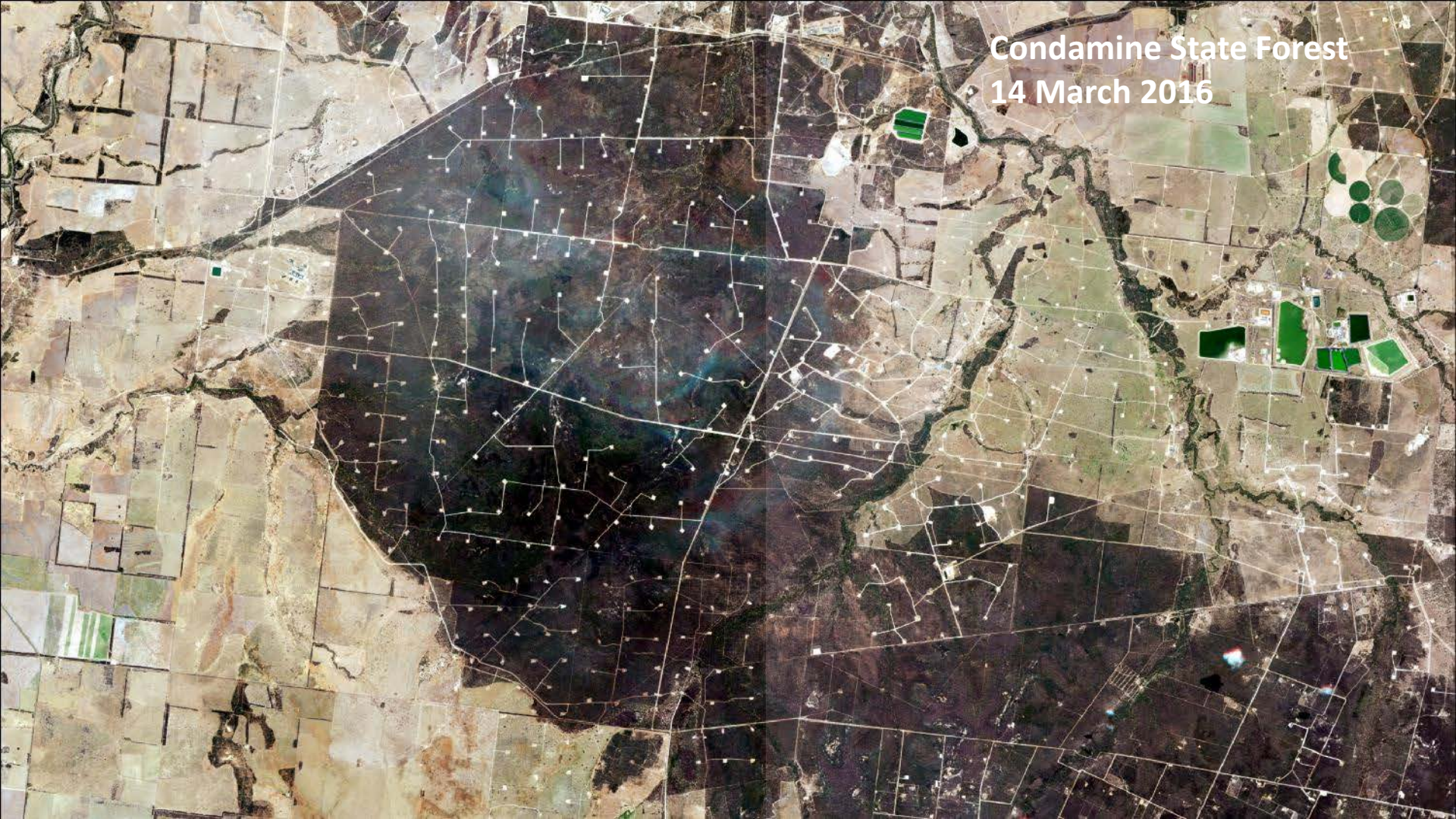


Condamine State Forest
13 September 2015



Condamine State Forest

14 March 2016



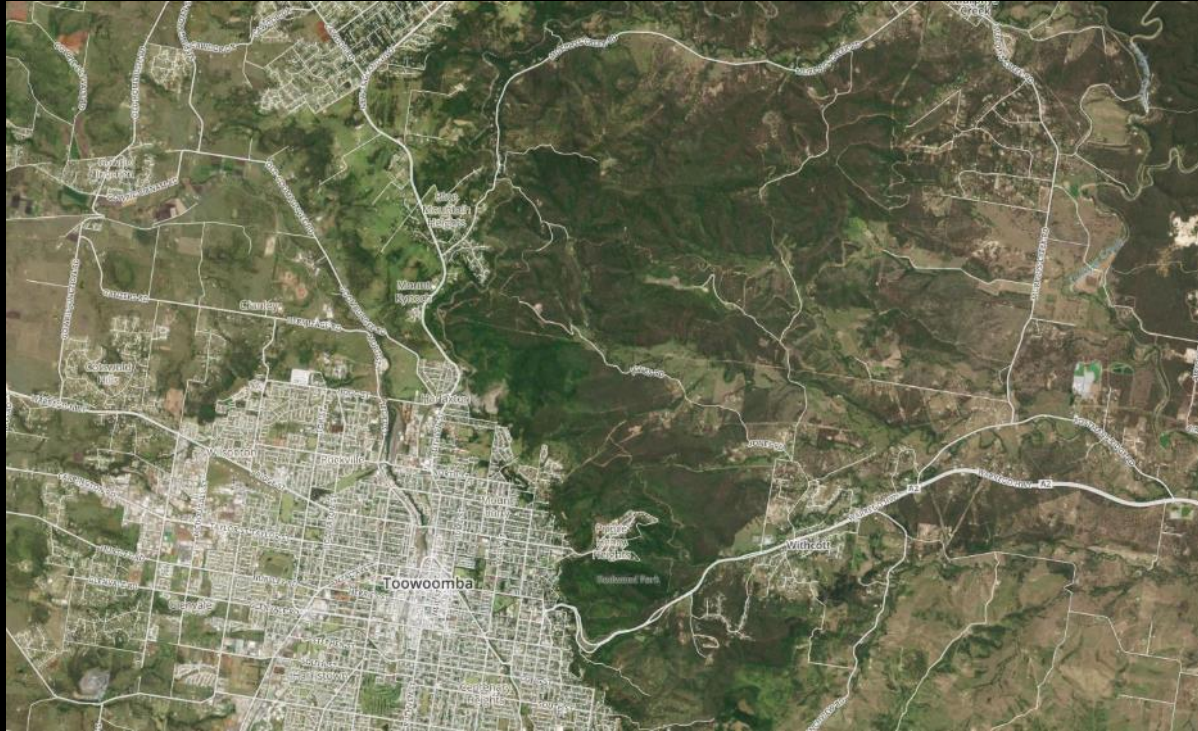
Condamine State Forest
3 July 2015



Condamine State Forest
31 January 2017

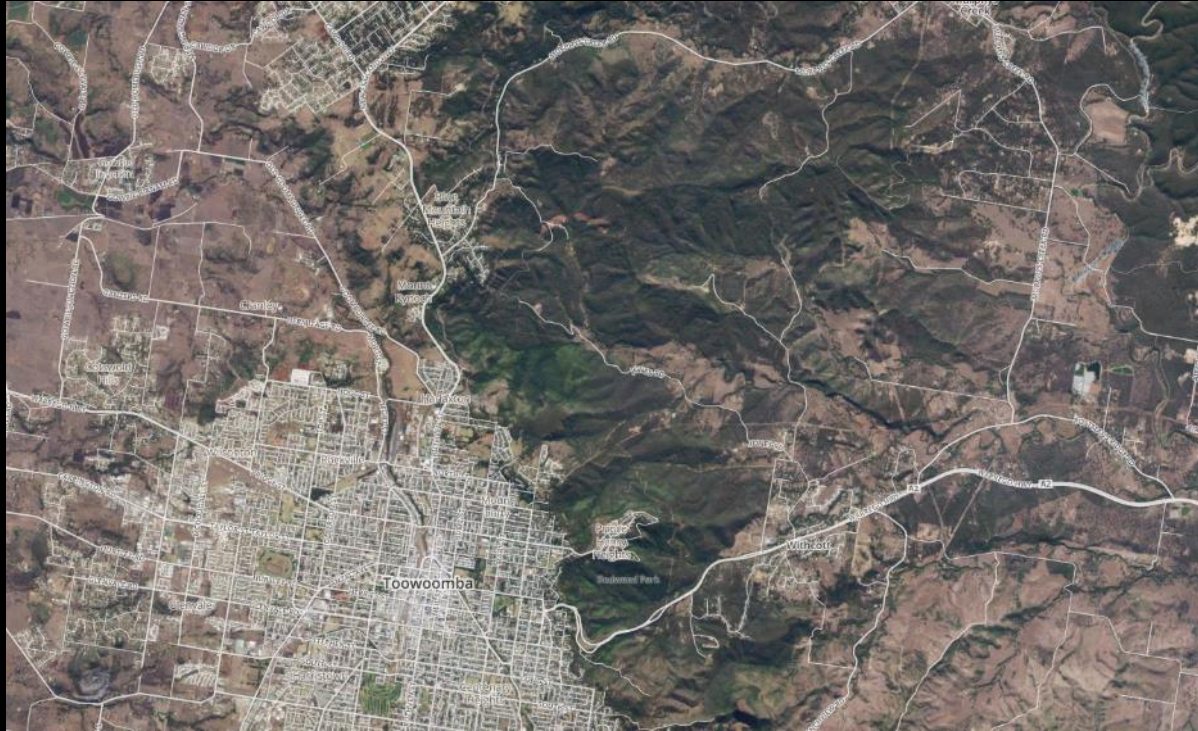


Monitoring Infrastructure



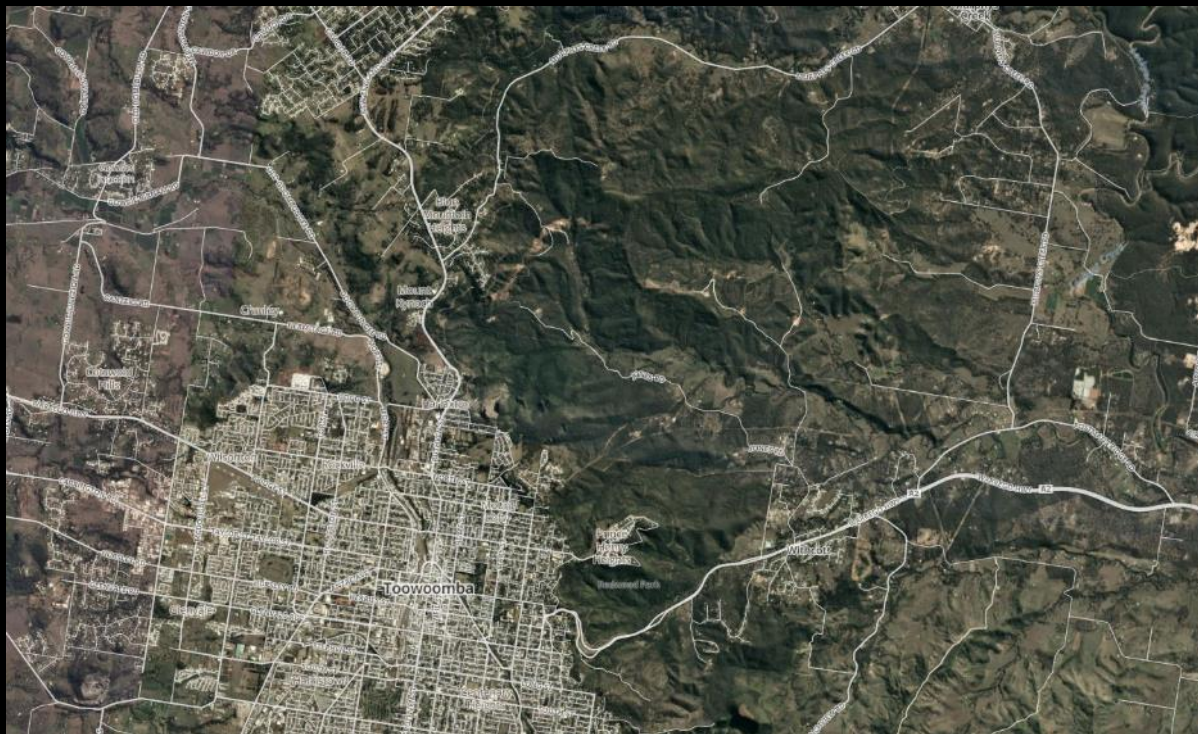
Toowoomba 2nd Range Crossing— 25 Feb 2016 (RapidEye)

Monitoring Infrastructure



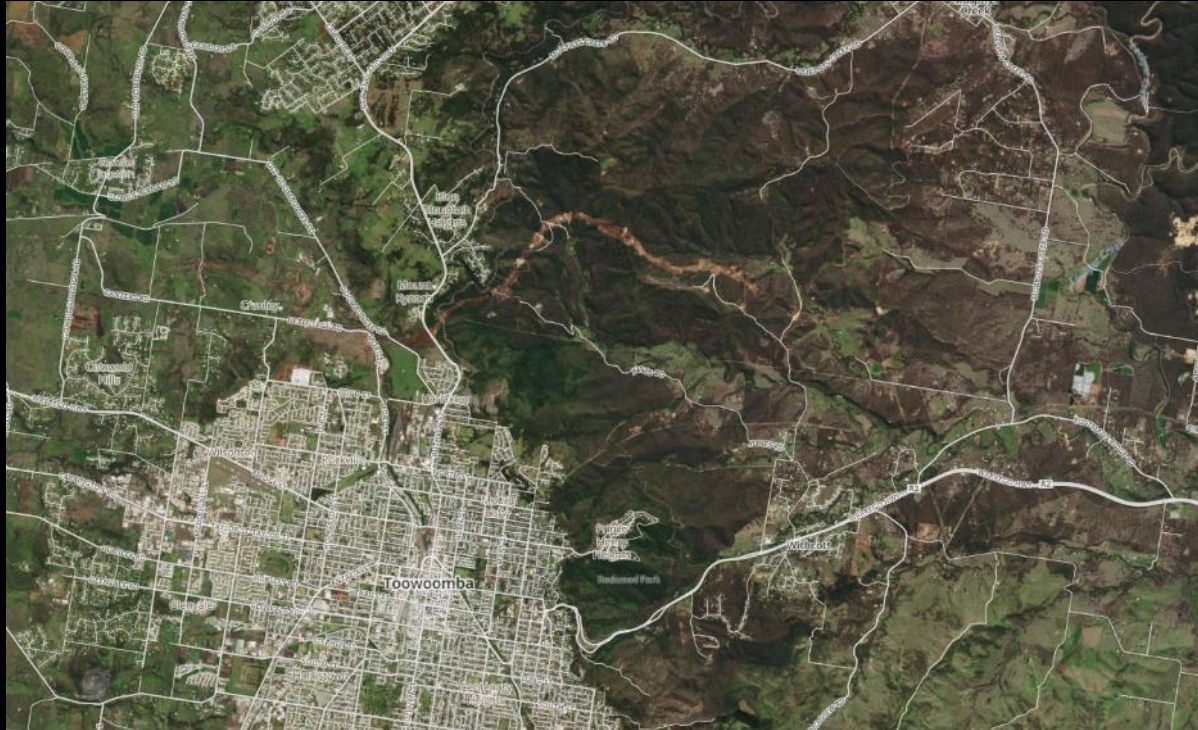
Toowoomba 2nd Range Crossing— 8 Jun 2016 (RapidEye)

Monitoring Infrastructure



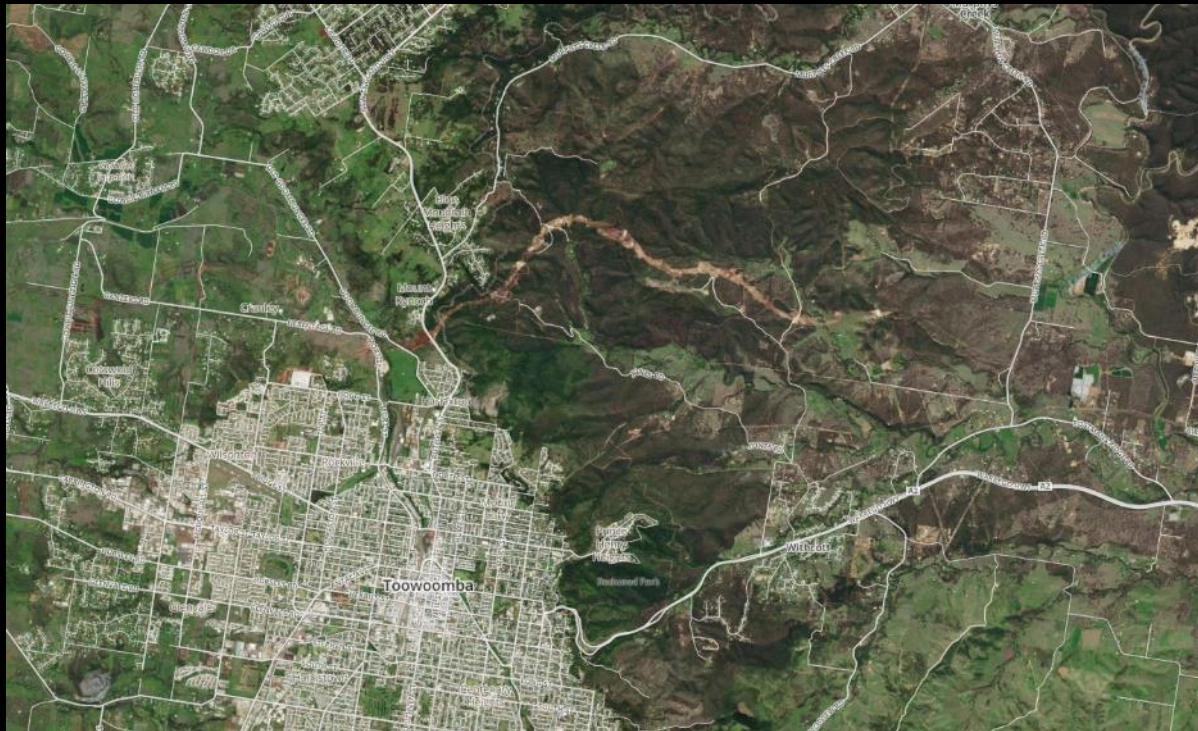
Toowoomba 2nd Range Crossing— 25 Jul 2016 (Planetscope)

Monitoring Infrastructure



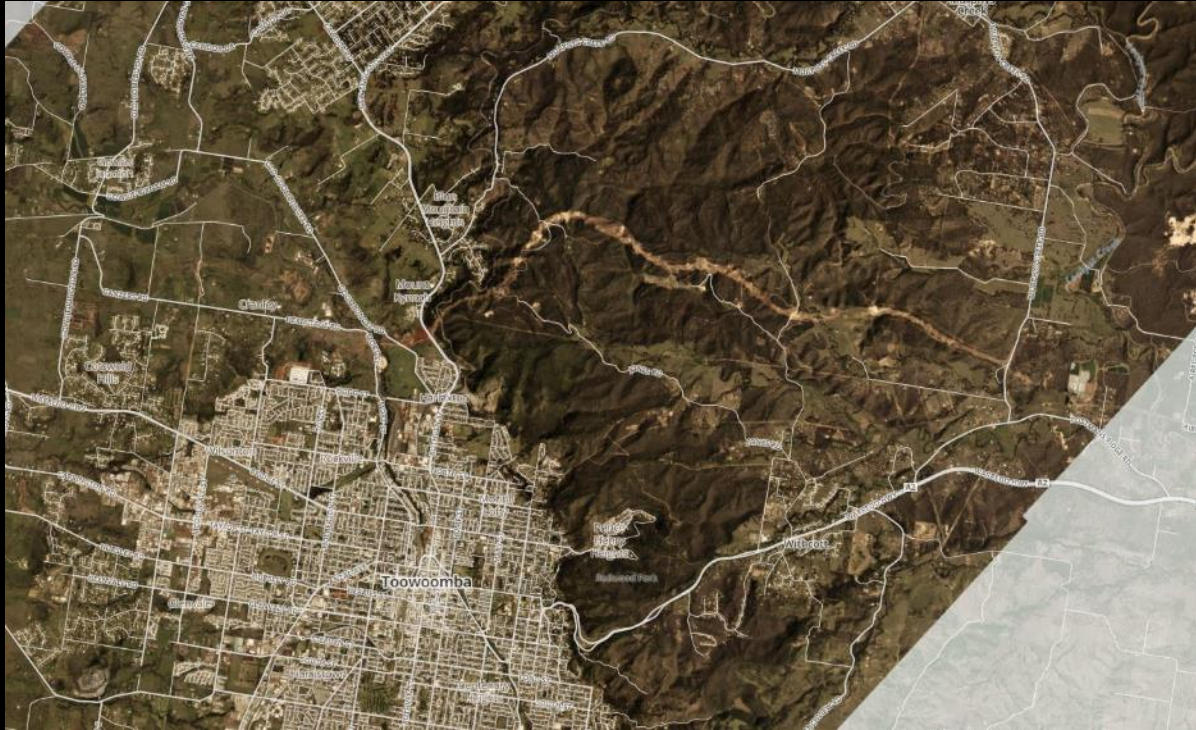
Toowoomba 2nd Range Crossing– 11 Sep 2016 (RapidEye)

Monitoring Infrastructure



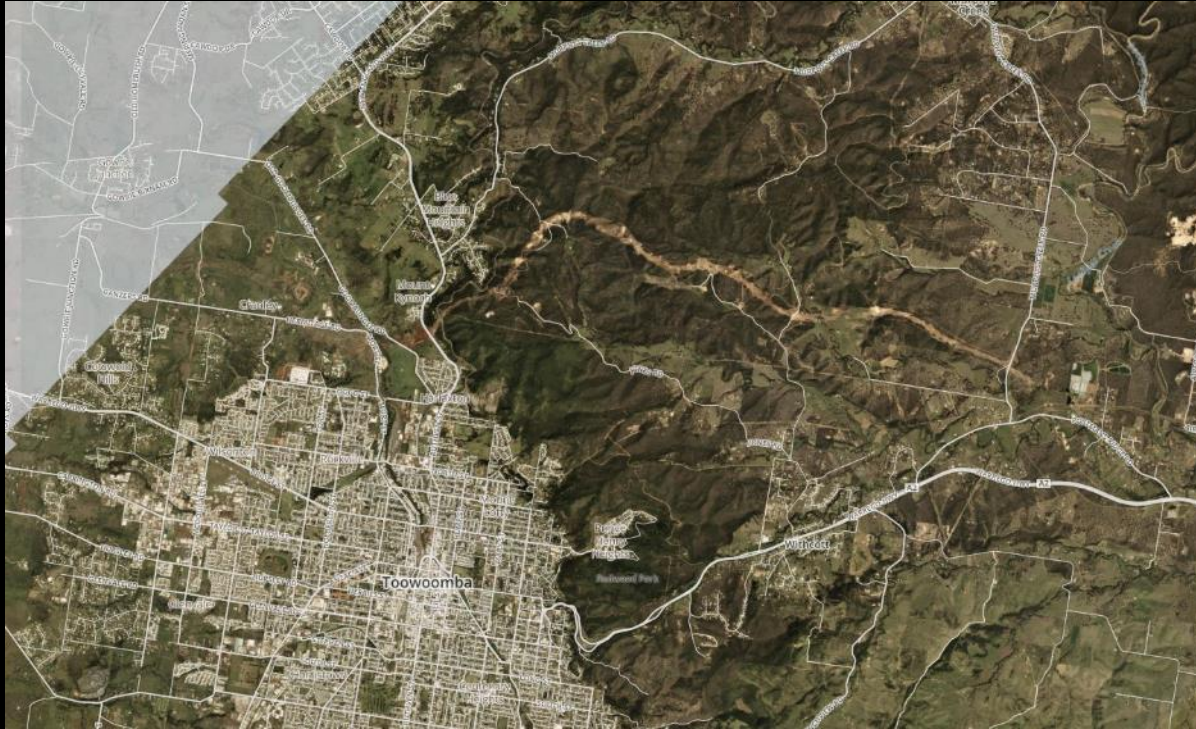
Toowoomba 2nd Range Crossing— 20 Sep 2016 (RapidEye)

Monitoring Infrastructure



Toowoomba 2nd Range Crossing– 1 Oct 2016 (Planetscope)

Monitoring Infrastructure

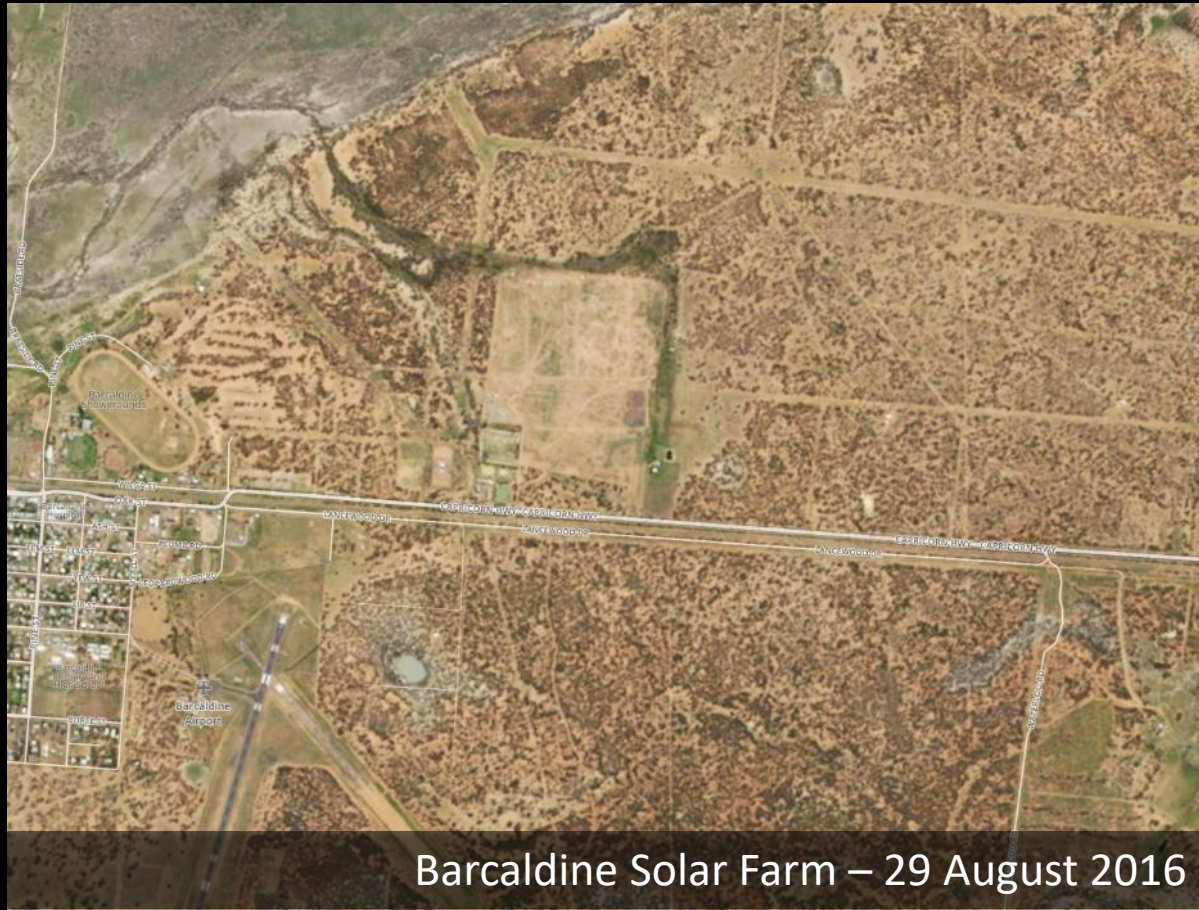


Toowoomba 2nd Range Crossing— 4 Oct 2016 (Planetscope)

Solar Farm Development



Solar Farm Development



Solar Farm Development

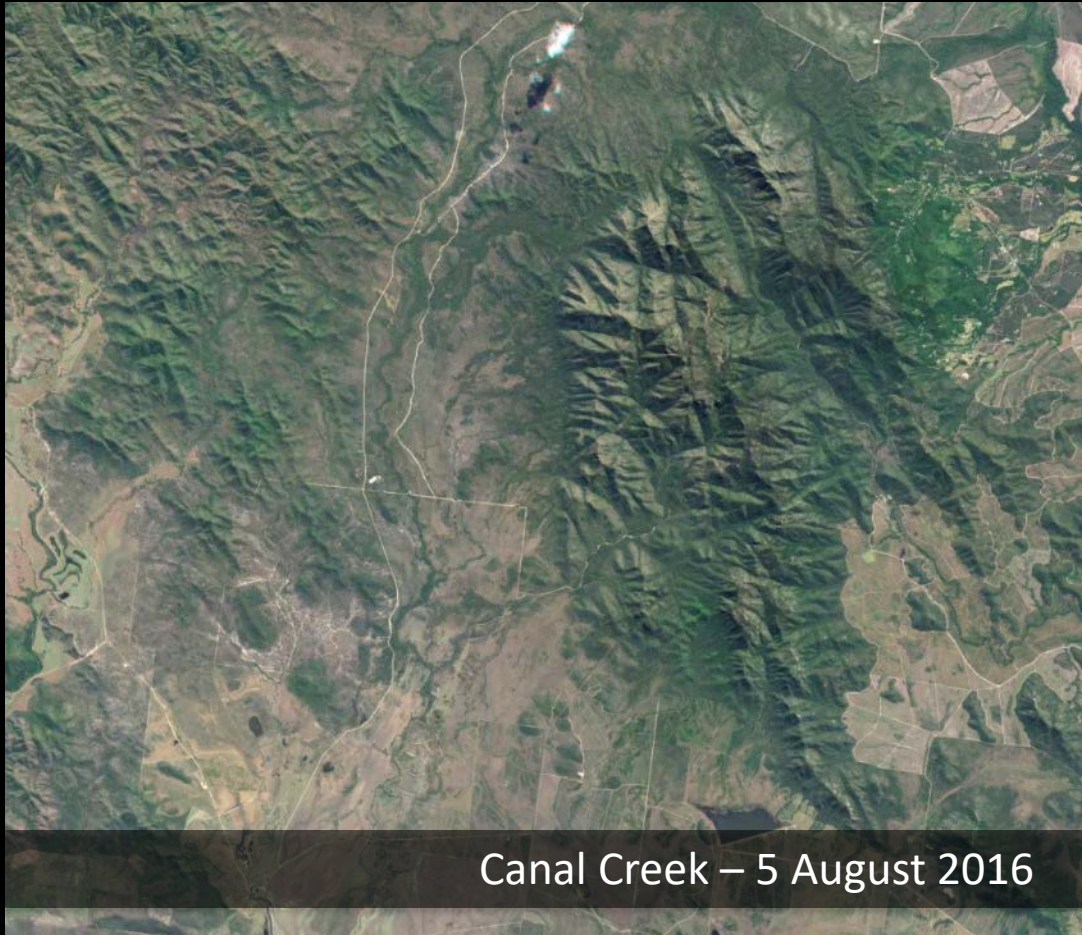


Solar Farm Development



Barcaldine Solar Farm – 30 January 2017

Environmental Monitoring - Fire



Canal Creek – 5 August 2016

Environmental Monitoring - Fire



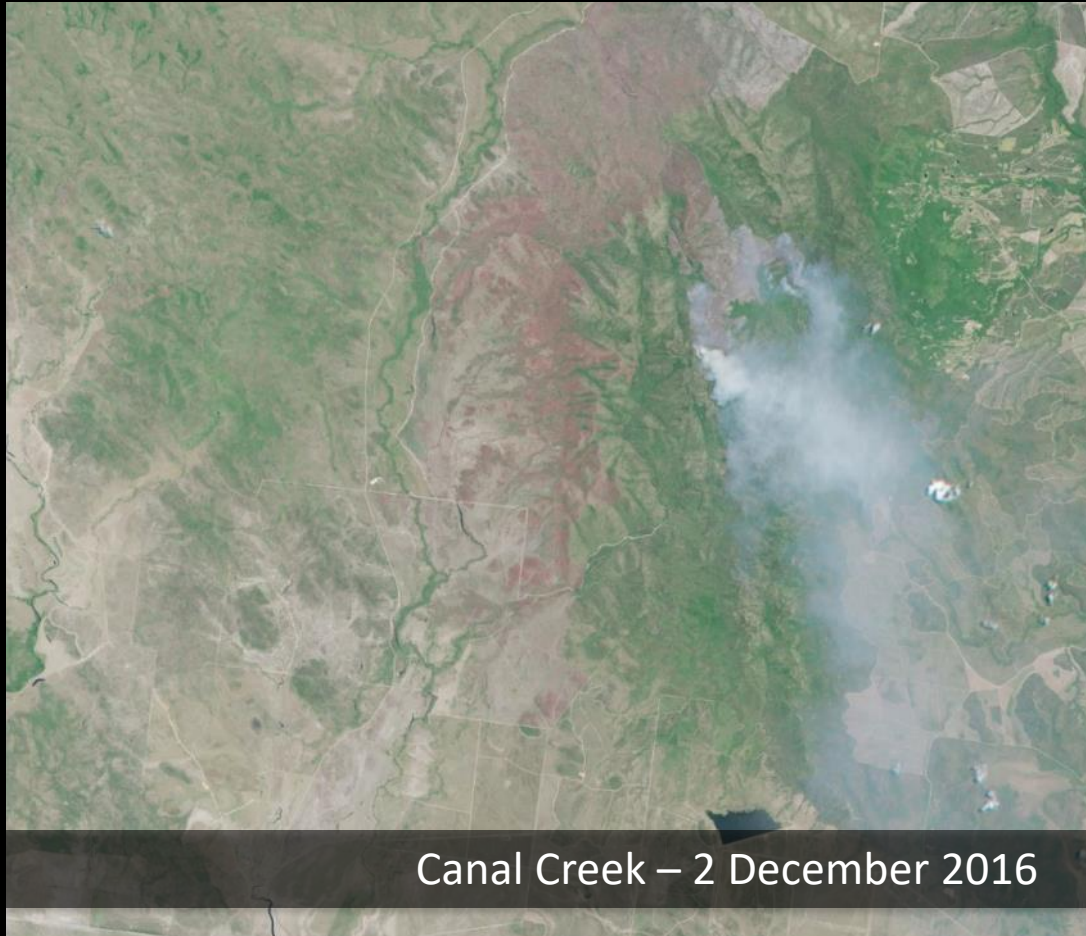
Canal Creek – 7 November 2016

Environmental Monitoring - Fire



Canal Creek – 29 November 2016

Environmental Monitoring - Fire



Canal Creek – 2 December 2016

Emergency Management



Coolum Bush Fire – 30 November 2016

Emergency Management



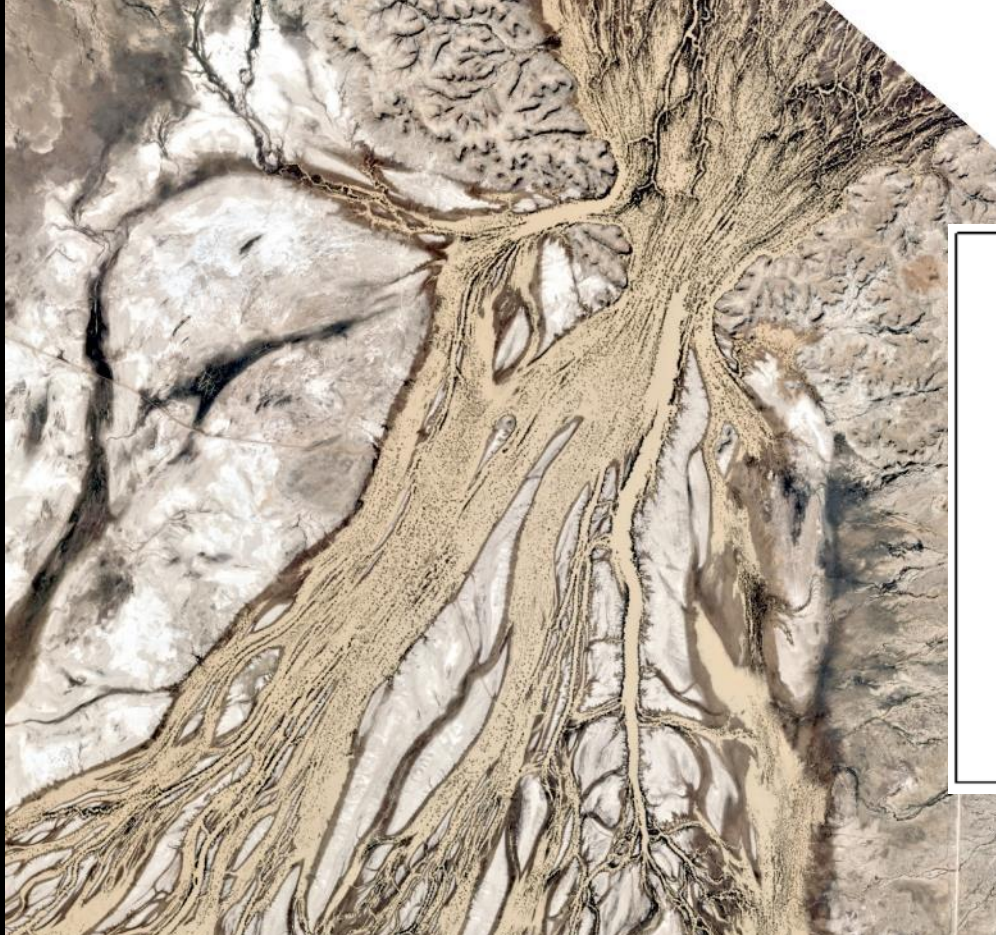
Coolum Bush Fire – 19 January 2017

Emergency Management

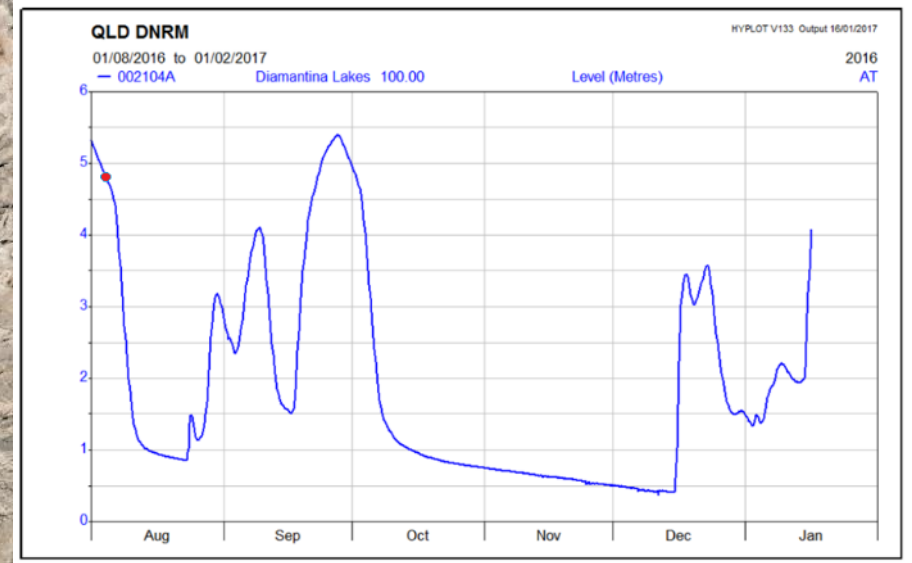


Coolum Bush Fire – 26 January 2017

Environmental Monitoring - Flooding

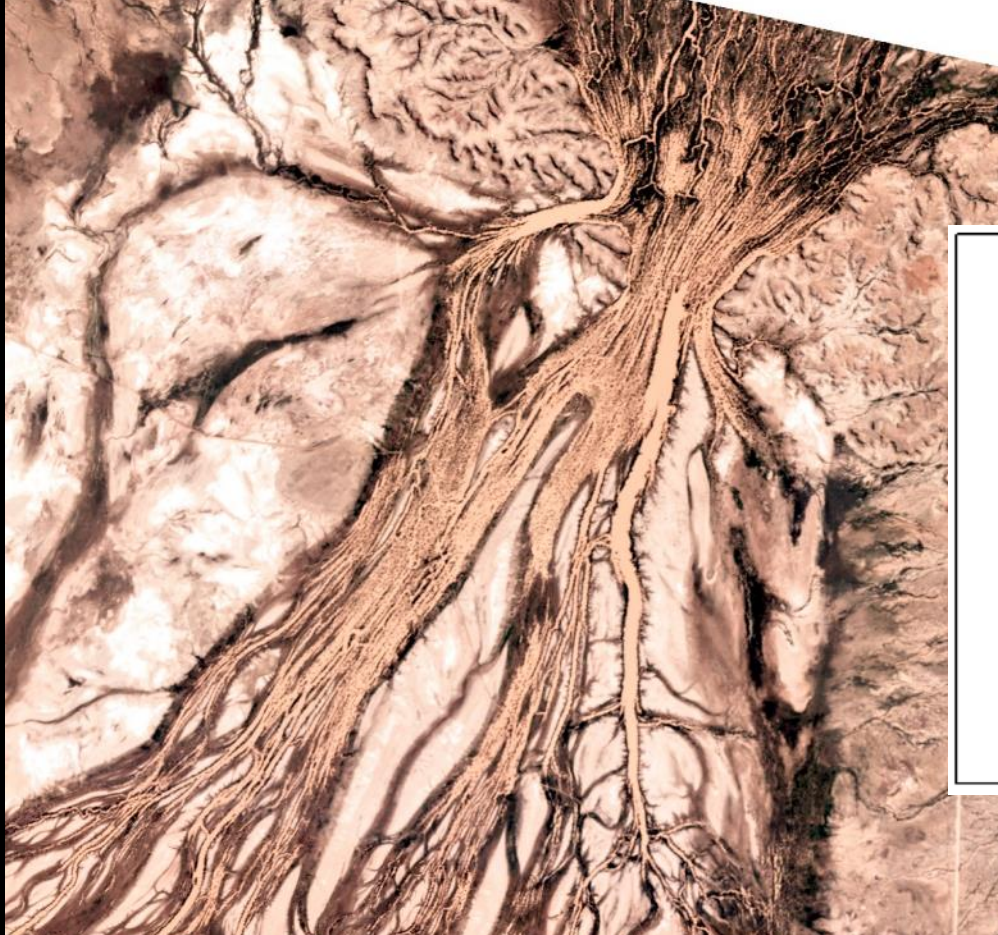


PlanetScope Imagery & Stream Water Levels

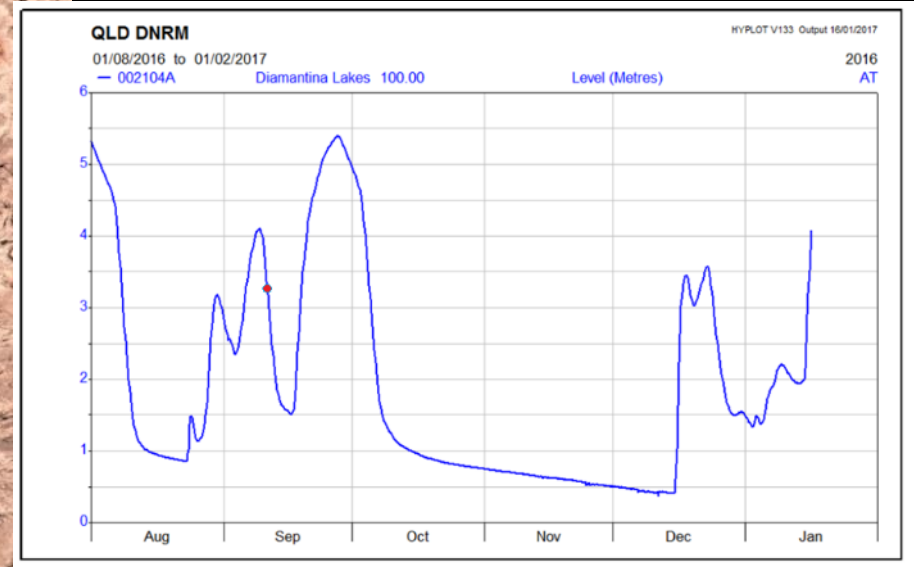


Diamantina Lakes – 3 August 2016

Environmental Monitoring - Flooding



PlanetScope Imagery & Stream Water Levels

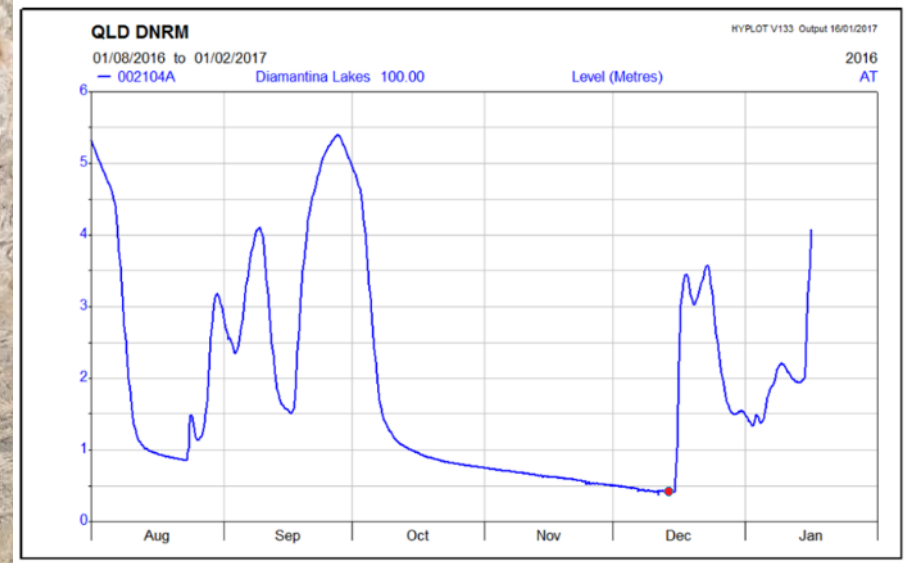


Diamantina Lakes – 7 September 2016

Environmental Monitoring - Flooding



PlanetScope Imagery & Stream Water Levels



Diamantina Lakes – 12 December 2016

A Superior Solution...



- *Earth-I's 80cm imagery p.a. plus*
- *3m Planet imagery*
- *Imagery archive available back to mid 2015*
- *Full coverage of Queensland*
- *Plus 4 'snapshots' of Queensland from Planet (every quarter) for archive*
- *One snapshot available as 'Open Data' – creative commons for anyone to use*
- *All imagery will be accessible for viewing in the Queensland Globe*

Data available to:

- *all Queensland Government Agencies*
- *All Local Governments*
- *All Government Owned Corporations*



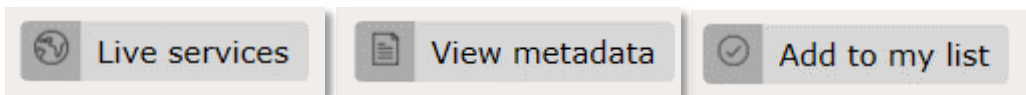
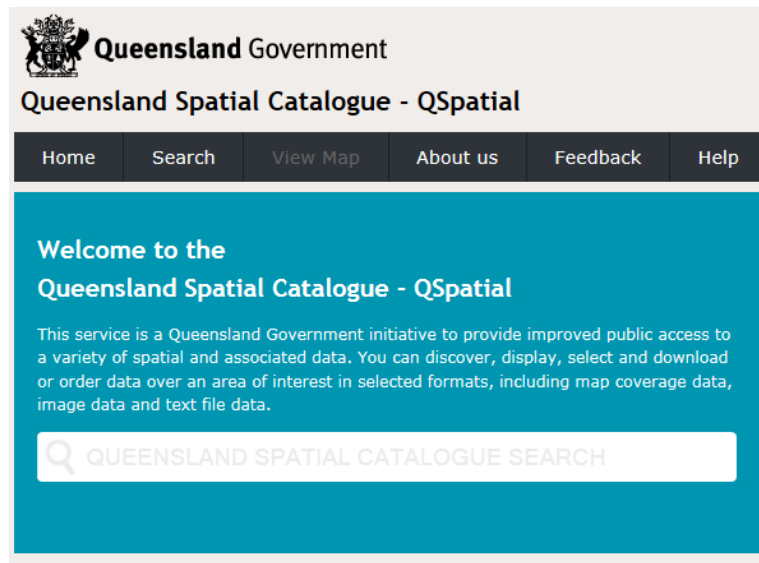
Accessing Queensland's Spatial Data



User choice

Find, connect, download & view

- Visualise through Qld Globe
- Download
- Connect directly via web services





Queensland Globe

Introducing a new release of the Queensland
Globe

Online portal to view location based
information maintained by the Queensland
Government

Over 600 layers of data

Current, free and available on any device

Biota (flora and fauna)
Boundaries
Economy
Elevation
Environment
Farming
Geoscientific information
Imagery and base maps
Inland waters
Locations
Oceans
Planning cadastre
Society



Welcome to Queensland Globe

The Queensland Globe is part of the Queensland Government's open data initiative.

The new Qld Globe draws on our experience with the current Globe and user feedback to improve our customers experience accessing the vast array of spatial information available, and importantly, it provides a sound foundation for future development.

While the beta version doesn't include all intended data layers or functionality, this is an important opportunity for you to experience the updated Globe and provide valuable feedback to assist us in refining the product prior to release.



By using the Queensland Globe you acknowledge the following [Terms & Conditions](#) and [Specific Data Conditions](#)

GET STARTED

TAKE TOUR

[Contact Us](#) [Copyright](#) [Disclaimer](#) [Privacy](#) [Right to information](#) [Accessibility](#) [Jobs in Queensland Government](#)
[Ελληνικά \(Other languages\)](#)

© The State of Queensland 2016

Queensland Government





Search



Topics



Layers



Places



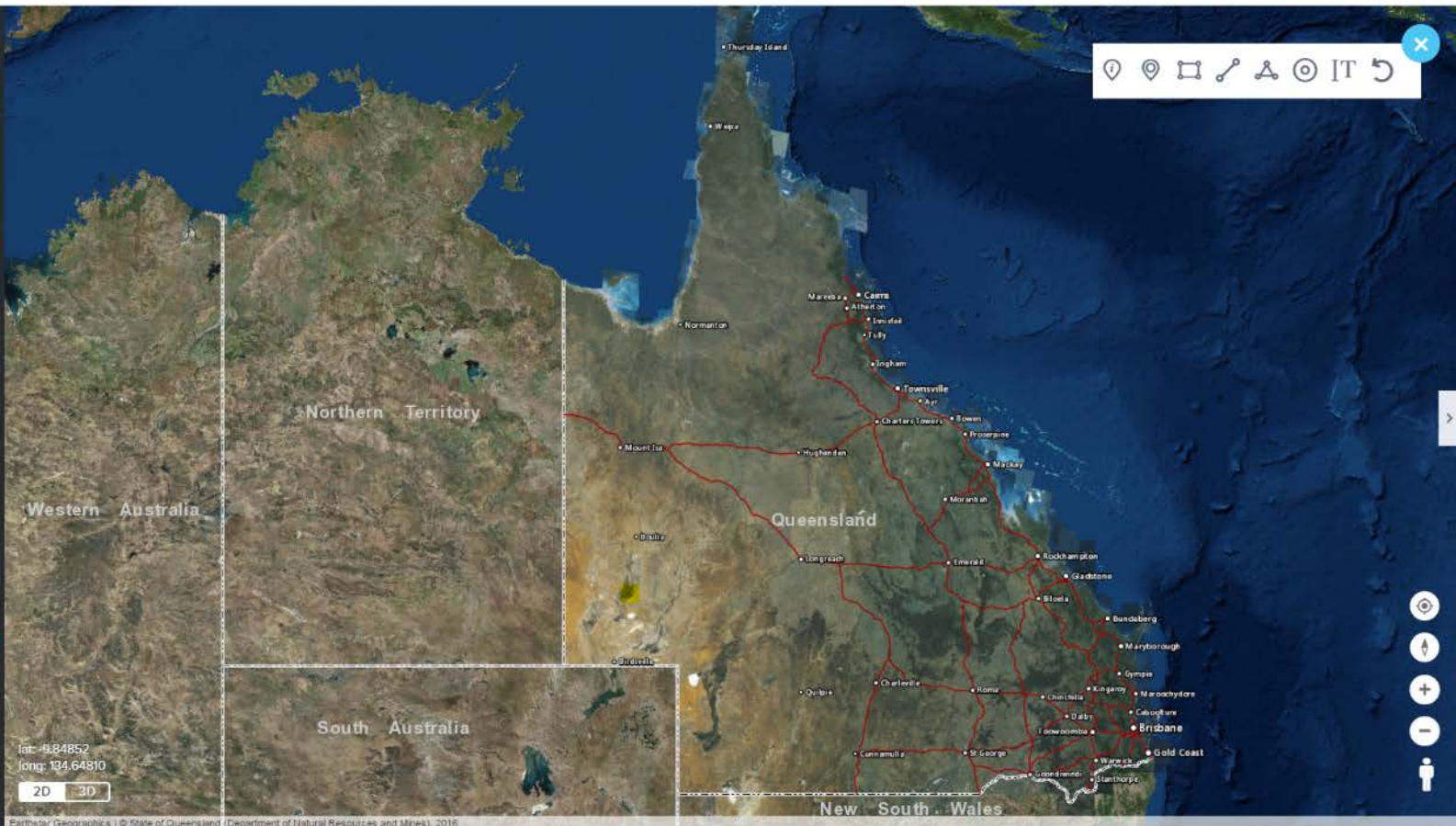
My Maps



Print



Help



Legend

Road

- Highway
- Main
- Connector
- Local
- Private or Restricted
- Track
- Malls
- Ferry
- Bikeway, Walkway
- Busway

Cities and Towns

.



Search



Topics



Layers



Places



My Maps

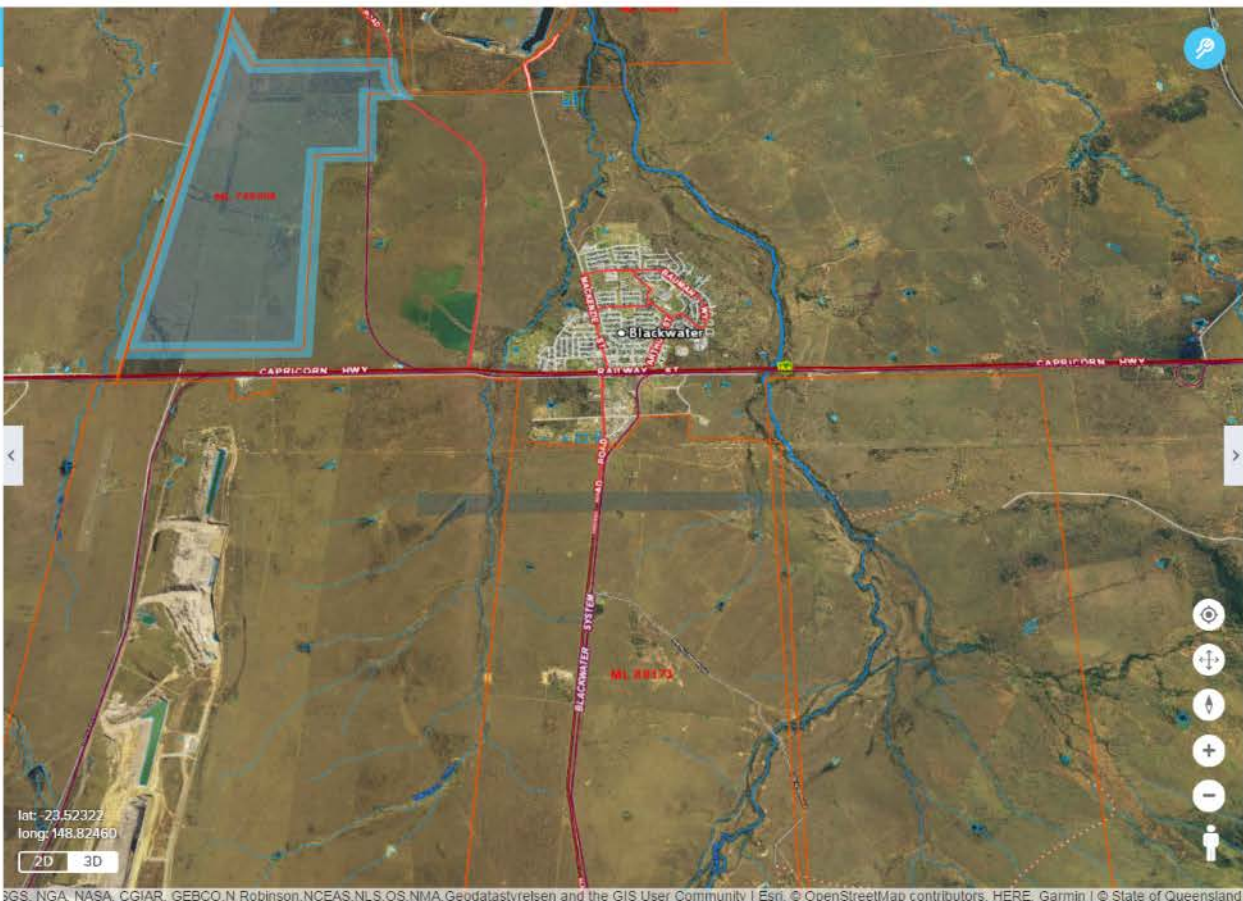


Help

Attributes



PERMITID	211922
DISPLAYNAME	ML 700006
PERMITNAME	Curragh South
PERMITTYPEID	10
PERMITTYPE	Mining Lease
PERMITTYPEABBREVIATION	ML
PERMITNUMBER	700006
PERMITSTATUSTYPEID	3
PERMITSTATUS	Granted
PERMITSTATE	None
PERMITMINERALS	COAL
LODGEDATE	15 April 2015
APPROVEDATE	27 June 2016



Legend

Coastline

Lakes

Reservoir

Canal Area

Watercourse Line

Minor Watercourse

Major Watercourse

Minor Culvert

Major Culvert

Watercourse Area

Perennial

Non Perennial

Water Area Edge

Road

Highway

Main

Connector

Local

Private or Restricted

Track

Malls

Ferry

Bikeway, Walkway

Busway



Queensland Globe

 <http://qldglobe.information.qld.gov.au>

Contact: opendata@dnrm.qld.gov.au



Queensland
Government

Thank-you

Questions or follow-up
opendata@dnrm.qld.gov.au